

# The wide world of Structured Products

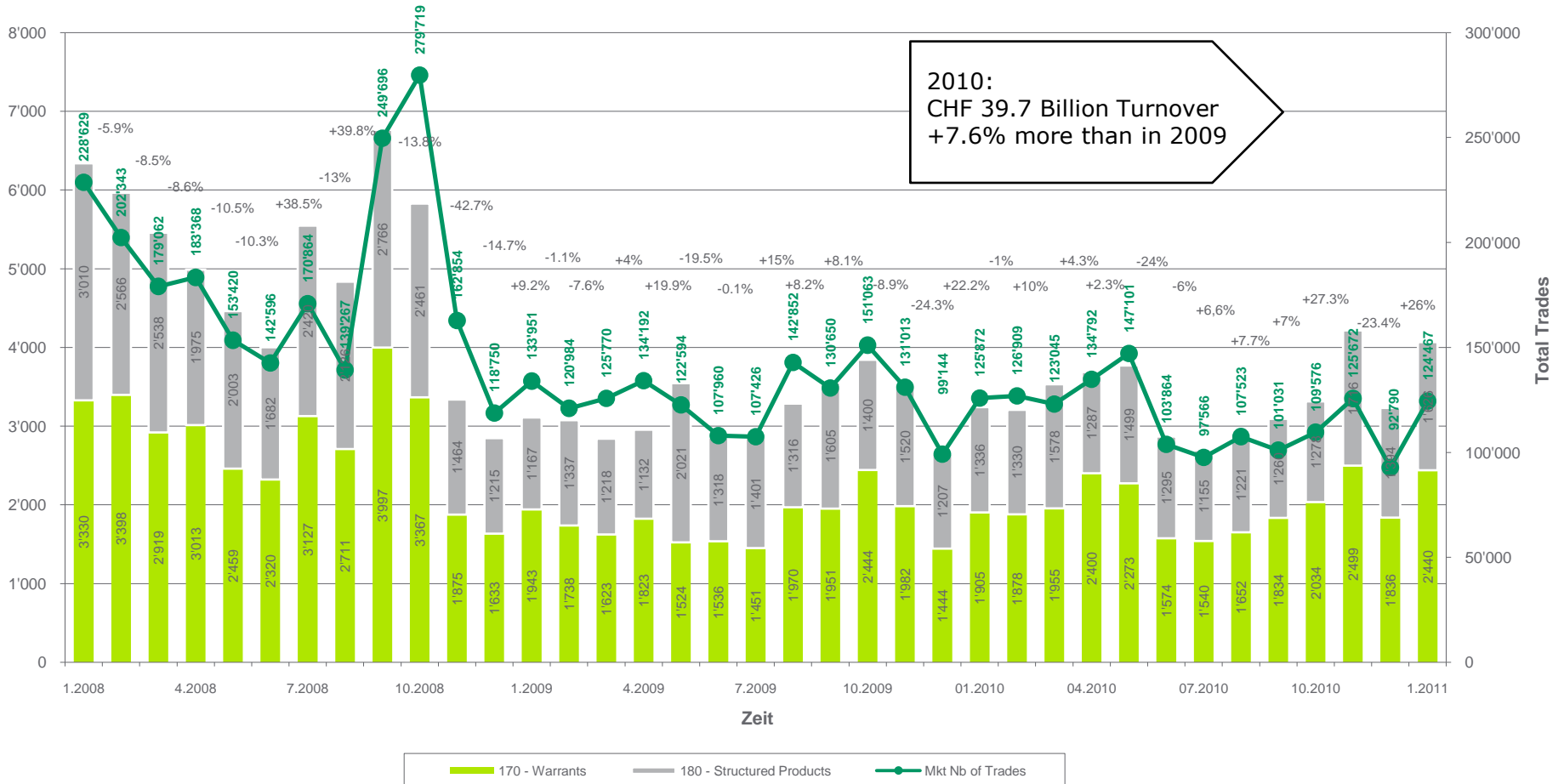
Transparency as a basis of success

Exchange Traded Product Day, Geneva 17. March 2011

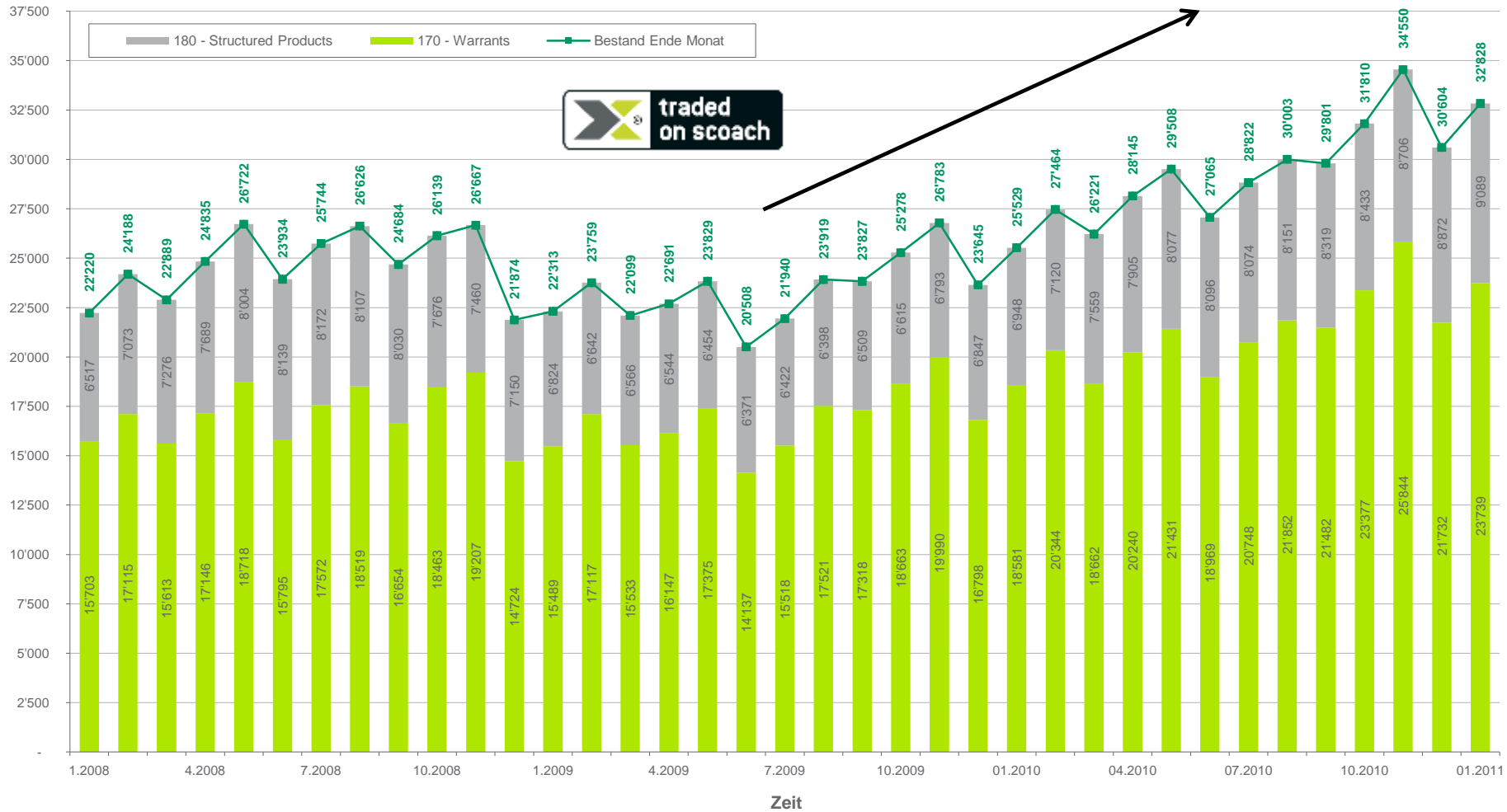


Scoach Schweiz AG

## Turnover & Trades



# Outstanding Derivatives

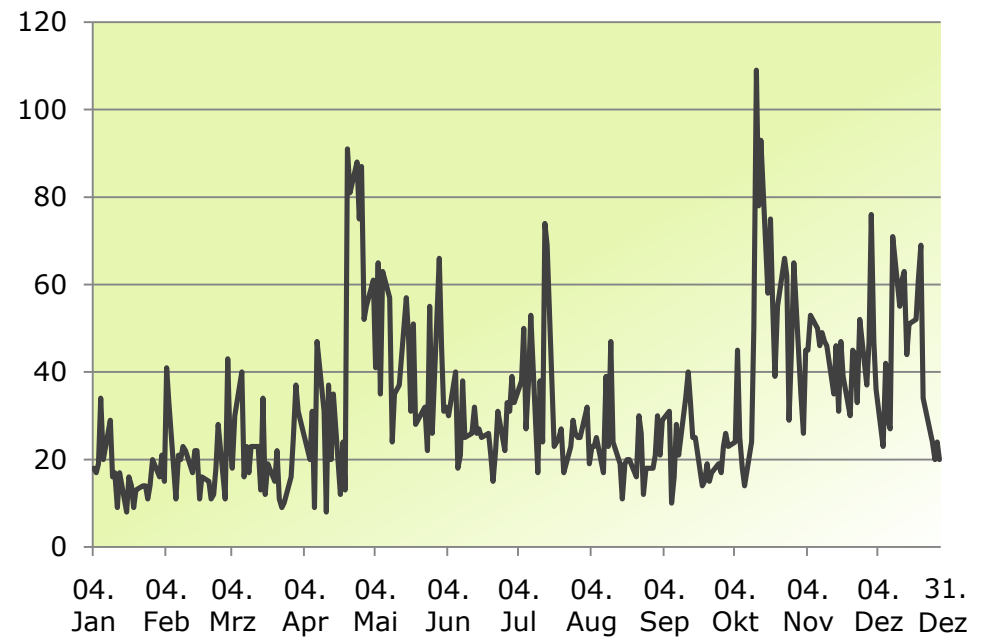


## COSI in a Nutshell

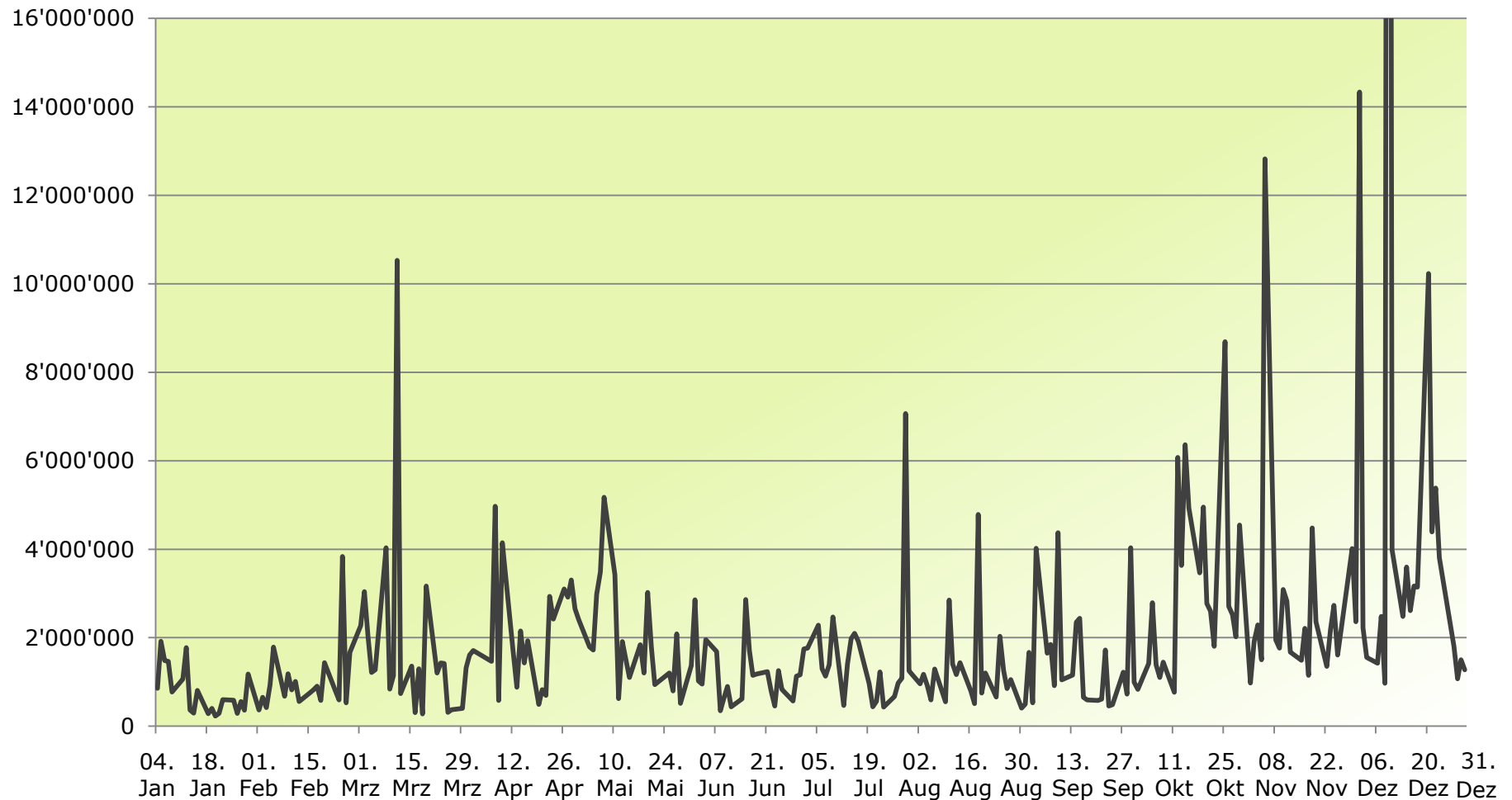


Number of Products (Stand 28.2.11)	945
Volume in CHF	1.98 Bil
Numbers of Issuers	4
Capital Protection Products	117
Yield Optimisation Products	688
Participation Products	113
Leverage Products	7

## Number Of Trades



## Daily Turnover Chf



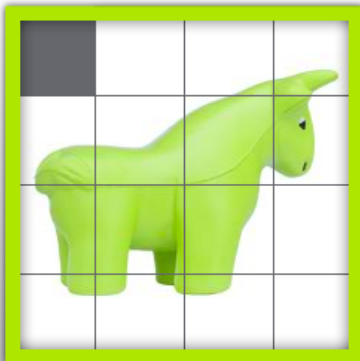
SMI 6'612.55 0.20% DAX 7'293.80 0.94% EUROSTOXX50 2'993.89 0.83% DOW JONES IND. 12'258.20 1.59%

**scoach** BY SIX GROUP AND DEUTSCHE BÖRSE Freitag, 04.03.2011 | 10:51:10 MEZ Marktplatz Deutschland | Schweiz Deutsch | English | Français

Name / Symbol / ISIN Lexikon-Suche Willkommen, Fabian! Logout

**AKTUELL** SUCHEN & FINDEN TOOLS WISSEN ÜBER UNS MY SCOACH

Marktübersicht | Termine | Handelsinfos | Mistrades | Service | Personalisieren Sie Ihre Seite



**Jetzt neu:**

Personalisieren Sie Ihre Seite ganz nach Ihren Bedürfnissen.

- Favoriten speichern
- Struktur verändern
- Watchlist auf Startseite zeigen
- ... und vieles mehr

Jetzt testen

Neue Funktionen Produkt-Suche Wissen für Einsteiger

**Kurse**

Marktübersicht

SMI	6'612.55	13.34	0.20%	▲	📈
DAX	7'290.85	64.89	0.90%	▲	📈
X-DAX	7'264.00	-9.03	-0.12%	➡	📈

**Scoach-Handel**

Trade-Ticker

Zeit	Valor	Kurs	Volumen
10:36:04	12163567	0.13	10'000
10:35:08	11263540	97.97	10'000
10:35:08	11263540	97.97	10'000
10:35:08	11263540	97.97	10'000
10:35:08	11263540	97.97	10'000
10:34:48	10519829	0.28	5'000
10:34:48	10519829	0.28	5'000
10:34:48	10519829	0.28	5'000
10:34:48	10519829	0.28	5'000
10:34:45	11554589	0.17	400'000

**Interaktiver Chart**

**Scoach-Analyse**

Scoach Indizes

Participation Index	1'410.8501	1.80%	0.13%	▲	📈
---------------------	------------	-------	-------	---	---



## Scoach-Magazin



## Brochures



## Newsletter



## Marktreport



**Thank you for your attention!**

